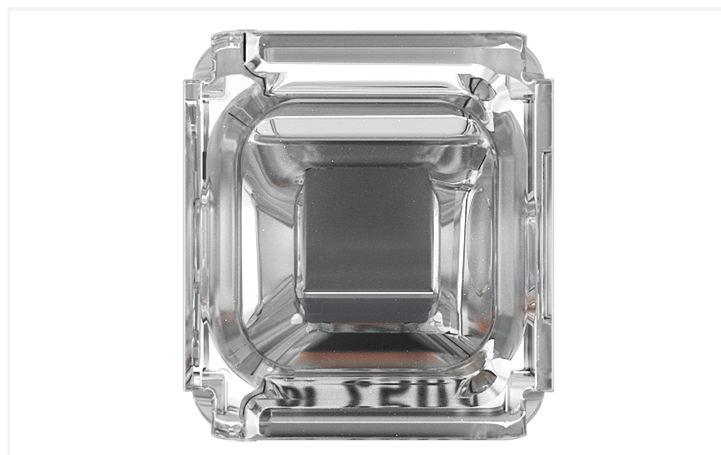


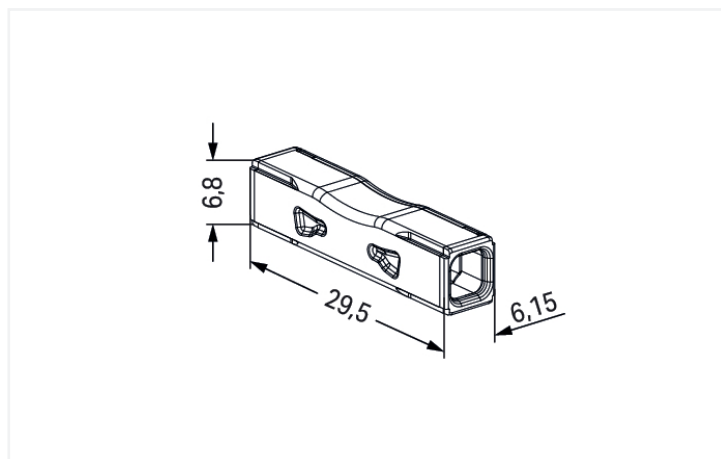
产品技术参数表 | 订货号: 2773-2401

PUSH WIRE® 直通式导线连接器; 适用于单股和多股导线; max. 4 mm<sup>2</sup>; 2线; 透明外壳; 透明盖板; 工作环境温度: 最大85 °C (T85); 4,00 mm<sup>2</sup>; 透明

<https://www.wago.com/2773-2401>



颜色:  透明



电气参数

额定电气参数依据的标准	EN 60664		
过电压类别	III	III	II
污染等级	3	2	2
额定电压	-	-	450 V
额定浪涌电压	-	-	4 kV
额定电流	-	-	32 A

认证	UL 486C		
Use group	B	C	D
额定电压	-	600 V	-
额定电流	-	20 A	-

## 接线参数

## 连接1

单股导线	0.75 ... 4 mm <sup>2</sup> / 18 ... 12 AWG
多股绞合导线	1.5 ... 4 mm <sup>2</sup>
细多股导线; 带有绝缘冷压接头	0.75 ... 1.5 mm <sup>2</sup> / 18 ... 16 AWG
细多股导线; 带有未绝缘冷压接头	1 ... 1.5 mm <sup>2</sup> / 16 AWG
导线直径	1.6 ... 2 mm / 18 ... 12 AWG
剥线长度	10 ... 11 mm / 0.39 ... 0.43 inches

## 物理数据

宽度	6.15 mm / 0.242 inches
高度	6.8 mm / 0.268 inches
深度	29.5 mm / 1.161 inches

## 材料参数

说明(材料数据)	<a href="#">Information on material specifications can be found here</a>
颜色	透明
罩盖颜色	透明
绝缘材料组别	IIIa
绝缘材料	聚碳酸酯(PC)
阻燃等级UL94	V2
夹持弹簧材料	铬镍弹簧钢(CrNi)
触点材质	电解铜(E <sub>Cu</sub> )
触点镀层	镀锡
火灾荷载	0.038 MJ
绝缘材料重量	0.8 g
重量	1.4 g

## 环境要求

工作温度	-35 ... +60 °C
持续工作温度	105 °C

## 商业数据

PU (SPU)	1000 (100) 个
原产国	CH
GTIN	4066966321630
海关税号	85369010000

**Environmental Product Compliance**

RoHS Compliance Status	Compliant, No Exemption
------------------------	-------------------------

**认证 / 证书**

**般認證** **符合性宣告和製造商宣告**



认证	其他认证信息	认证名称
CB DEKRA Certification B.V.	IEC 60998	NL-86543
cULus_Listed_667F Underwriters Laboratories Inc.	UL 486C	E69654
ENEC 05 DEKRA Certification B.V.	EN 60998	71-127515

认证	其他认证信息	认证名称
EU-Declaration of Confor- mity WAGO GmbH & Co. KG	-	-

**下载**

**Environmental Product Compliance**

Compliance Search	
Environmental Product Compliance 2773-2401	↓

**CAD/CAE-Data**

CAD data	
2D/3D Models 2773-2401	↓

**1 相关产品**

**1.1 可選配件**

**1.1.1 通用附件**

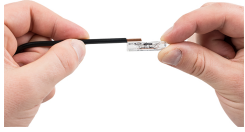
**1.1.1.1 电气安装用接线端子**



**订货号: 207-5485/316-000**  
 电缆维修套件; 适于多芯电缆; 直通式; 带有  
 胶水; 适用电缆直径 8-24 mm; 带有封闭式导  
 线连接器; 中壁; 黑色

操作说明

连接导线



Strip conductor to 10 mm.



Insert the conductor.



Check for the correct conductor position.

拆除导线



Twist the connector alternately left and right while pulling it off the conductor.

应用



Wiring conductors in a flush-mounted junction box.



Extending short wires.



Use with a shrink tube



Use of the inline splicing connector (for plugging in with a shrink tube) in the cable repair set 207-5485/316-000.

应用



Damaged cable



Strip the damaged cable approx. 10 cm uniformly around the damaged area.



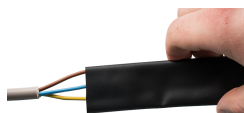
Cut out the damaged areas in the copper and disconnect all other conductors. For damaged areas between 1 mm and 30 mm, at least 30 mm of the damaged conductor must be removed. Tip: A connector (approx. 30 mm long) can be used as a length guide.



Strip conductor and conductor bridge to 10 mm specified and insert into connector. Only one connector is required for damage points < 1 mm or conductors with a flat cut. Two connectors with wire jumpers must be used for damage points > 1 mm.



Strip 10 mm conductor per specification and insert connector (example shows staggered connectors).



Pull the shrink tube over the cable end.



The shrink tube must have an overlap length of at least 30 mm on the cable sheath.



Heat the shrink tube evenly with a hot air blower between 110°C and 200°C.

